

# 1 BEDFORD ROW

1 Bedford Row, London, WC1R  
4BU



PRIVATE OFFICES  
&  
BUSINESS MEMBERS CLUB

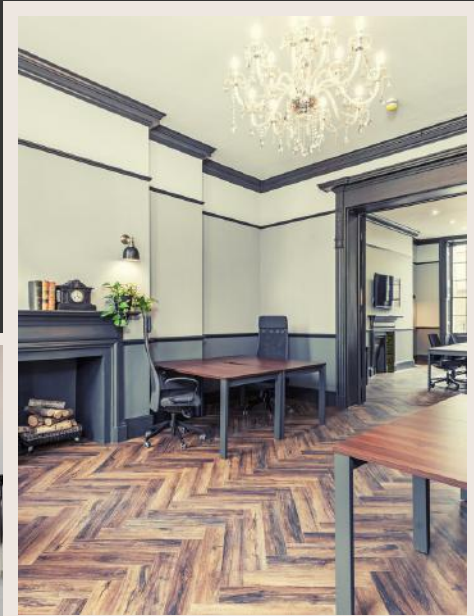
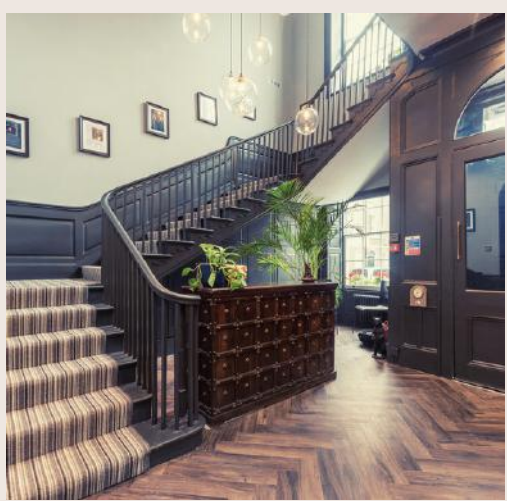


This beautiful 300-year-old mansion features a classically elegant interior, high ceilings and traditional Georgian architecture.

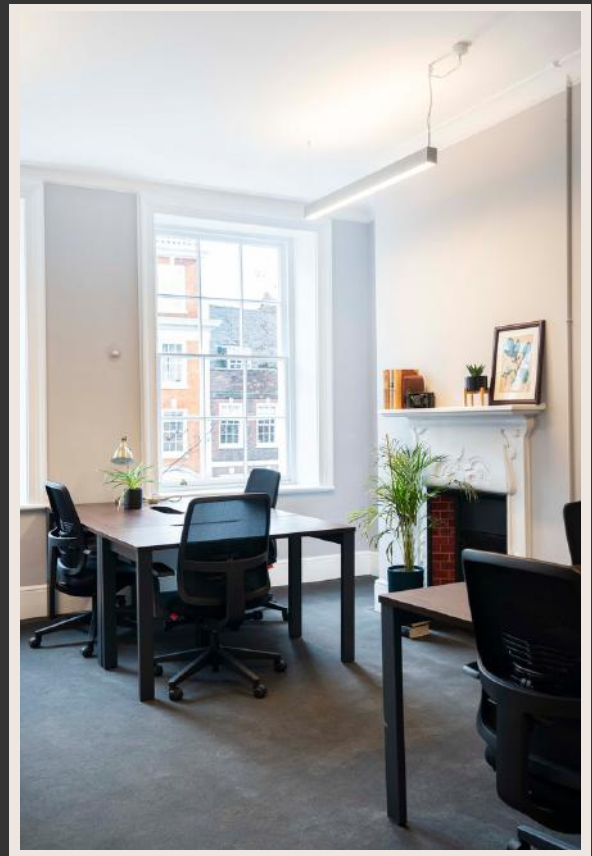
We have utilised the quirky features of the building to make it a place of wonder – the perfect exploring opportunity when you feel like taking a break away from your desk. Relax with a coffee in "The Vault" (basement members' lounge) or hold a meeting under one of the courtyard arches.



Beyond the grand reception is a relaxed customer lounge, dedicated meeting rooms, private offices, and intimate break areas.



Hold meetings in style in our luxury boardrooms.



Our private offices are ergonomically designed, with high-quality furniture and customisable options to suit your needs.

## REGULAR MEMBER EVENTS & FREE BAR



Our inviting communal spaces, passionate team on standby, regular community-building events, and free bar(!), have created a supportive and fun community atmosphere for our members, who are all small-to-medium sized businesses.



"SELECTED FOR LOCATION, BUT **STAYED FOR THE SERVICE!** If you choose to take space here, you will be very happy. There is a real community feel within the building, spearheaded by Maria and her team that run the building. They provide a real personal touch and they run some really fun events! Highly recommended!"

-Graham S

"Maria and Ana run the place very well. If things break, **they get it fixed quickly** with a minimum of fuss. There is a high degree of cleanliness."

— Steve Evans, FDU

We are tenants at The Office and couldn't be more pleased to be here! Ana and Maria do a stellar job of running the day-to-day and are always there to ensure everything is going as smoothly as it should be. The communal spaces are well maintained and stocked (Nespresso, fruits, milk & alternatives. etc.) and create a **very social atmosphere in the building.**  
It has been an absolute pleasure coming in to work here :)"

-Ilan OBADIA

## MAKE 1 BEDFORD ROW YOUR BUSINESS ADDRESS

Proudly greet your clients at this prestigious, iconic London address.



## THE PERFECT LOCATION

Chancery Lane (Central Line) and Holborn (Central and Piccadilly Lines) are just a 5-minute walk away.

1 Bedford Row is surrounded by cafés, restaurants, and pubs – ideal for an after-work get-together. A gorgeous park, Lincoln's Inn Fields, resides opposite – a perfect detox from the bustling city atmosphere should you need a break from work.

## An Iconic Location, Steeped in History

One of the many attractions of 1, Bedford Row is the rich history of the building. Built in 1718, previous illustrious inhabitants include the Duchess of Chandos, Cassandra Willoughby; and James Bonner, a barrister at Doctors' Commons (1724) amongst many others. 1, Bedford Row was occupied for over 200 years by the prestigious law firm Gregory, Rowcliffe and Milners from 1807 until 2022. It also featured in the recent adaptation of Sherlock Holmes starring Ian McKellan, chosen for its unspoilt Georgian architecture.

Lastly, for you rugby fans out there: in 1871, the Proposed Laws of the Game by the Rugby Football Union were written and signed in No.1, Bedford Row!



## OUR FULLY-EQUIPPED, PRIVATE OFFICES HAVE EVERYTHING TAKEN CARE OF:

- Members events
- Complimentary fresh fruit
- Complimentary bar (alcoholic & non-alcoholic options)
- Spacious offices with high-quality furniture
- Luxury Boardrooms for up to 15 people
- Fast Fibre Wi-Fi connectivity for you and your guests, in every corner of the building
- A friendly member of the Front of House team is on hand Mon-Fri, 08:30-17:30 to greet your clients
- Shower rooms & bike storage
- Air conditioning throughout
- Self-contained kitchen with complimentary tea and high quality coffee
- 24/7 access
- Business rates, daily cleaning, utilities and facilities management all included



We believe our serviced offices are unparalleled in Holborn. They are designed to cater to your every need, ensuring your team can focus on what really matters - your business.

## **‘MEET OUR PASSIONATE TEAM, DEDICATED TO MAKING YOUR WORKDAY THE BEST IT CAN BE’**

The Drayton is a small founder-led team, with a blend of backgrounds and experiences. Everyone lives by one common goal: to construct exceptional homes for SMEs across the capital.



Ashley  
Membership



Elena  
Membership



Madi  
Operations



Maria  
The Boss





## BOOK YOUR PERSONAL TOUR TODAY

Maria

07468592657

[sales@theoffice.co.uk](mailto:sales@theoffice.co.uk)

Lydia

07834362588

[lydia@theoffice.co.uk](mailto:lydia@theoffice.co.uk)

[WWW.THEOFFICE.CO.UK](http://WWW.THEOFFICE.CO.UK)